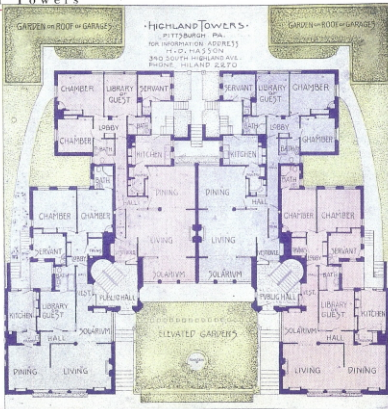


HIGHLAND TOWERS
PITTSBURGH, PA.
340 S. HIGHLAND AVE.

SCHEIBLER
ARCHITECT

The location is in the heart of the best residential section of East Liberty;
near enough for convenience, far enough for restful quiet.

Highland Towers



Every Room has a bountiful supply of daylight and fresh air

HIGHLAND TOWERS

Apartment Homes

IN this splendid apartment, owner, architect and builder have worked together to give not only the utmost of modern comfort but also that beauty which adds so much to the enjoyment of a Home. Highland Towers comprise a few select **Homes** as attractive in appearance, as satisfying in arrangement and as perfect in construction and equipment as modern art and science could make them. In beauty and comfort you will not find an apartment anywhere which excels them.

The Touch of Home Beauty

The Towers was built with the object of attracting those who appreciate the real beauty of home. Its standards in quality and artistic merit are those which a man holds when he builds a home for himself. Iron, cement, brick and hollow tile form the skeleton. It is a scientifically fire-proof, sound-proof structure. The manner in which it is finished in Tapestry Brick, Rookwood Tile, White Oak and Mahogany will give you a pleasant surprise.

"Here," you will say, "is something really beautiful."

Throughout the apartments—the homes—this same high standard of beauty and true quality is upheld. Through the different rooms, which constitute an apartment, the beauty and convenience the builder has provided, repeatedly wins admiration.

The decorating and finishing has been done by artists in this line and the same exacting care has been given to the selection and placing of the Lighting and to the Hardware and Electrical equipment.

Entrance

Through the elevated garden, into a Tower Hall with floor laid in random blocks of green and white Rookwood, blending into a wall of golden tapestry brick and a ceiling of stalactite effect.

Solarium

Enclosed in steel casement windows, overlooking a beautiful garden.

Garden Terrace

A mass of shrubbery and vines, a fountain and an old-fashioned garden, beautify the entrance through the elevated garden and afford a restful view from the Solarium.

A Little About the Rooms

The Living and Dining Rooms are finished in oak and mahogany and equipped with book and china cases of handsome design and finish, and with a built-in brick fireplace of logs. Electrical connections are supplied for library table lamps, fans and dining room table equipment. These rooms have an abundance of light and air by metal casement windows.

The Bed Rooms are finished in mahogany and equipped with large wardrobes with dressing mirrors, electrical attachments for adjustable light and toilet necessities, and call bells and telephone.

The Bath Rooms are equipped with built-in tubs and showers, and vitreous china fixtures and accessories, steel medicine cases, mirror and attachments for electrical appliances. These rooms are finished in tints and designs of Rookwood tile and Carara glass.

The Vestibule is supplied with a coat cupboard and large mirror. Off the lobby is a Trunk Room. A large Linen Case is also built close to the trunk room, off the lobby.

The Kitchen and Pantry have floors laid of a sanitary material of a slightly elastic nature, much easier to keep clean, and decidedly easier to stand on, than cement. The Cupboards are built of metal—thoroughly sanitary. These rooms are also equipped with the latest approved kitchen sinks and pantry sinks of copper. Built into the pantry is a glass-lined Refrigerator, mechanically cooled, of the latest

and best type. This dispenses with the ice man. The kitchens are also fitted with attachments for any necessary electrical equipment. A high grade Cabinet Range, and a Refuse Incinerator complete the kitchen equipment. This latter article eliminates the garbage can from your back porch, and adds to cleanliness.

Comfortable and convenient Servant Room and Bath a part of each suite.

Noteworthy Features of the Construction

Division Walls and Floor between Suites—

Between your apartment and that of your neighbor in this building are walls of the same construction as the outside walls—fire-proof and sound-proof—not merely the narrow partition walls which you almost invariably find, even in fire-proof construction. Those who have lived in apartments will appreciate the rarity and benefit of this feature. The floors are also sound-proof.

The Laundry is equipped with a series of triple wash trays and built-in Copper Wash Boilers. These wash boilers are hooded to a flue from the laundry and all steam or odor from the washing is taken up the flue to the outside air. Individual Steel Lockers are supplied for washing and ironing equipment. The latest improved Clothes Dryers, Ironing Room Stoves and Sinks, and Ironing Boards with attachment for electric irons are also supplied. Individual Lockers are installed in the basement for the use of each tenant.

Other Things Which Count for Comfort

A thorough vacuum cleaning plant is installed and is a part of the building equipment. A Refrigerating Plant supplies a cooling system to each refrigerator, as well as a limited supply of ice for sickness or table use.

Heat is supplied by the Modulated Vapor System, adjustable to the heating conditions of each apartment or each room. This is far superior to steam or hot water, and much easier regulated.

Particular attention has been paid to parts that are hidden in the walls and floors—for instance, the Sewering, which is properly laid and carefully taken care of, and the Plumbing—all pipes and tanks wherever water touches them are Brass or Copper, thus insuring you against rusty, dirty water and adding to cleanliness. A Burglar Proof Safe is built into the brick walls of each apartment. Copper Screens and Weather Strips are a part of the window and door openings.

The Roof Garden

A large, open Roof Garden overlooking the Elevated Garden in the front of the building and accessible through the Tower Entrance will be maintained for the convenience of the tenants.

Garage Garden

There is a Garage in the rear for tenants having cars. It is steam heated and electric lighted. On the roof is a mass of shrubbery and flowers, making a delightful view from your rear windows.

Reception Room

A large Reception Room, appropriately decorated, furnished and equipped will be at the disposal of the tenants by appointment for certain social functions.

The Office and Janitor's Apartment

These are located in the basement and are kept in close touch with each apartment and with the Main Hall through a complete telephone system.

Accessibility

Highland Towers is easily accessible from all parts of the city by a dozen different car lines and is within eight minutes walk of East Liberty Station.

We Invite You to Call We Challenge You to Compare

Highland Towers is, we believe, the most nearly perfect building for the purpose that you have ever seen; results have been achieved that have never been seen before in Apartment Home construction and equipment. This is a strictly high grade Apartment Home, under the constant supervision of expert property management, together with efficient and courteous janitor service. We solicit your careful consideration and challenge comparison with other apartments anywhere.